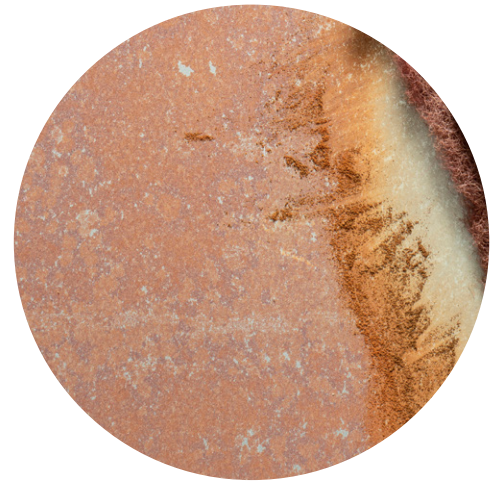




PHOS B

Surface Etch + Prep

Phos B is a preparation and etching product to remove rust from iron and steel surfaces, prepares metal surfaces to give better paint adhesion. Also can be used to etch concrete surfaces prior to painting.



How to use:

For heavily rusted surfaces

Remove any oil, grease and dirt from surface. Remove loose rust with wire brush. Apply Phos B neat with a brush. Work solution into rusted areas and allow to dry overnight to fully neutralise rust. Rinse or wipe surface with damp cloth to remove any rust residues. Paint treated surface within 48 hours. For treating metal for painting

For treating metal for painting

Remove oil, grease and dirt. Dilute Phos B 1 to 3 parts water in a plastic container. Apply product by brush. Thoroughly rinse surface after 15-30 minutes. Paint treated surface within 48 hours from preparation. For etching concrete

For etching concrete

Concrete must be clean of sealers and coatings. Dilute Phos B 1 to 4 parts water in a plastic container. Apply to surface using a plastic watering can with sprinkle head at rate of 60-80 sq feet per litre. Let product foam for 10 minutes and then rinse with plenty of water, scrubbing lightly with a nylon brush to remove any residues. Allow surface to dry before coating.

Curing

Paint the treated surface within 24 hours of use. Remove loose rust from the surface with a wire brush.

Surface Preparation

Always test a small hidden portion of the substrate before use, to ensure the final result is satisfactory and to calculate consumption.

When treating a rusted surface, make sure it is free from oil, grease and dirt. Remove loose rust from the surface with a wire brush. For etching concrete, ensure it is free from sealers and coatings prior to application.

Cleaning of equipment:

Clean tools and equipment immediately after use with water. Always read safety instructions before use. Keep away from shrubs, plants and grass. Do not use on aluminium or marking may occur.

Precautions for use:

For Health & Safety instructions, first aid measures, spillages and disposal instructions, see separate Health & Safety Data Sheet (MSDS).

Uses:

- Removal of rust from surfaces prior to painting such as: metal pipes, metal structures and metal cladding
- Preparation prior to painting metal gates, metal garage doors and railings
- Cleaning concrete floors such as warehouse floors, garage floors, prior to sealing and painting
- Removes surface calcium / efflorescence from masonry surfaces
- Removal of grout and cement blooms
- Removes hard water stains, lime scale and soap

Product Characteristics

| | |
|--------------------------|---|
| Colour | Clear |
| Odour | Barely Perceptible |
| Form | Liquid |
| PH | 1-2 |
| Shelf Life | 24 Months from the date of manufacture in the original unopened container - keep away from children |
| Application Temperatures | Minimum +5°C Maximum 30°C |
| Coverage | Approx. 4 - 8m ² per litre depending on the surface. |

Storage:

Keep out of reach of children
Keep in a dry place between 5°C and 30°C in the original container.